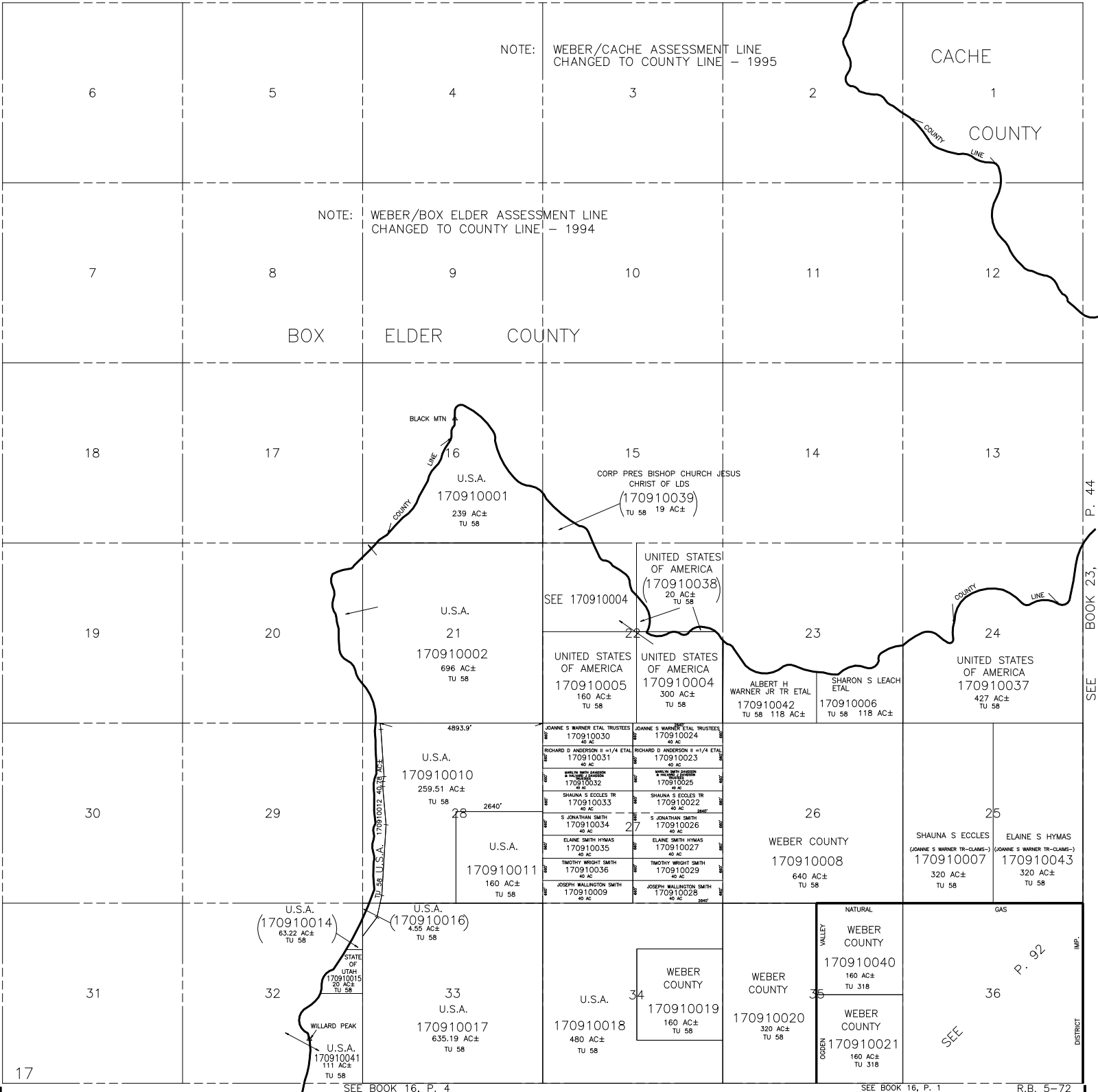


T.8N., R.1W., S.L.B. & M.

TAXING UNIT: 58,318

IN WEBER COUNTY  
SCALE 1" = 2000'



NOTE: WEBER/CACHE ASSESSMENT LINE CHANGED TO COUNTY LINE - 1995

NOTE: WEBER/BOX ELDER ASSESSMENT LINE CHANGED TO COUNTY LINE - 1994

BOX ELDER COUNTY

CACHE COUNTY

BLACK MTN

U.S.A.  
170910001  
239 AC±  
TU 58

CORP PRES BISHOP CHURCH JESUS CHRIST OF LDS  
(170910039)  
TU 58 19 AC±

UNITED STATES OF AMERICA  
(170910038)  
20 AC±  
TU 58

U.S.A.  
21  
170910002  
696 AC±  
TU 58

SEE 170910004

UNITED STATES OF AMERICA  
170910005  
160 AC±  
TU 58

UNITED STATES OF AMERICA  
170910004  
300 AC±  
TU 58

ALBERT H WARNER JR TR ETAL  
170910042  
TU 58 118 AC±

SHARON S LEACH ETAL  
170910006  
TU 58 118 AC±

UNITED STATES OF AMERICA  
170910037  
427 AC±  
TU 58

4893.9'  
U.S.A.  
170910010  
259.51 AC±  
TU 58

JOANNE S WARNER ETAL TRUSTEES  
170910030  
40 AC

JOANNE S WARNER ETAL TRUSTEES  
170910024  
40 AC

RICHARD D ANDERSON II -1/4 ETAL  
170910031  
40 AC

RICHARD D ANDERSON II -1/4 ETAL  
170910023  
40 AC

SHARON S ECCLES TR  
170910032  
40 AC

SHARON S ECCLES TR  
170910025  
40 AC

S JONATHAN SMITH  
170910034  
40 AC

S JONATHAN SMITH  
170910026  
40 AC

U.S.A.  
170910011  
160 AC±  
TU 58

ELANE SMITH HYMAS  
170910035  
40 AC

ELANE SMITH HYMAS  
170910027  
40 AC

TIMOTHY WRIGHT SMITH  
170910036  
40 AC

TIMOTHY WRIGHT SMITH  
170910029  
40 AC

JOSEPH WALLINGTON SMITH  
170910009  
40 AC

JOSEPH WALLINGTON SMITH  
170910028  
40 AC

WEBER COUNTY  
170910008  
640 AC±  
TU 58

SHAUNA S ECCLES (JOANNE S WARNER TR-CLAIMS-)  
170910007  
320 AC±  
TU 58

ELAINE S HYMAS (JOANNE S WARNER TR-CLAIMS-)  
170910043  
320 AC±  
TU 58

U.S.A.  
(170910014)  
63.22 AC±  
TU 58

U.S.A.  
(170910016)  
4.55 AC±  
TU 58

STATE OF ILLINOIS  
170910015  
20 AC±  
TU 58

U.S.A.  
33  
170910017  
635.19 AC±  
TU 58

U.S.A.  
34  
170910018  
480 AC±  
TU 58

WEBER COUNTY  
170910019  
160 AC±  
TU 58

WEBER COUNTY  
170910020  
320 AC±  
TU 58

NATURAL VALLEY  
WEBER COUNTY  
170910040  
160 AC±  
TU 318

WEBER COUNTY  
170910021  
160 AC±  
TU 318

GAS IMP.  
P. 92  
SEE

SEE BOOK 23, P. 44

DISTRICT